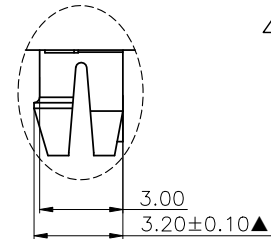
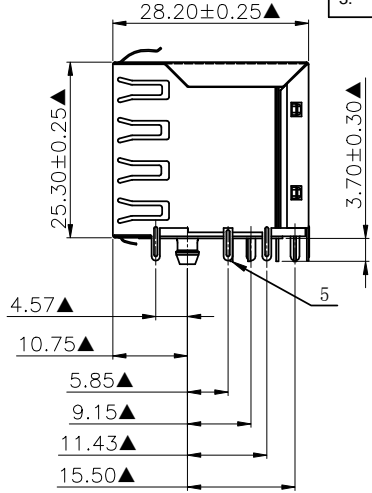
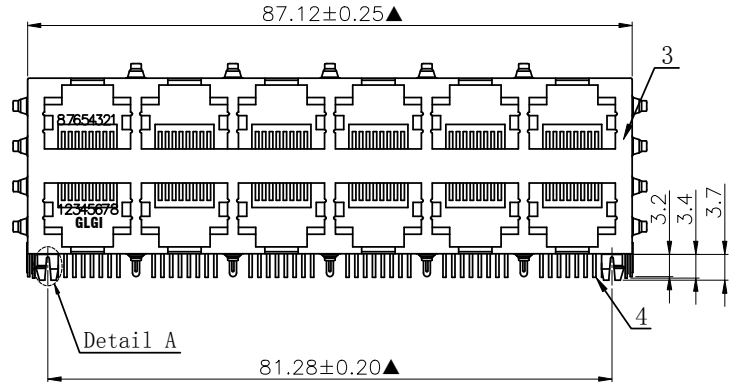


NO.	ECN NO.	DESCRIPTION	REV.	DRAW	DATE
1.					
2.					
3.					



43046-00 X X X 1

规格流水码

电镀规格  
S 半金亮锡  
M 半金雾锡

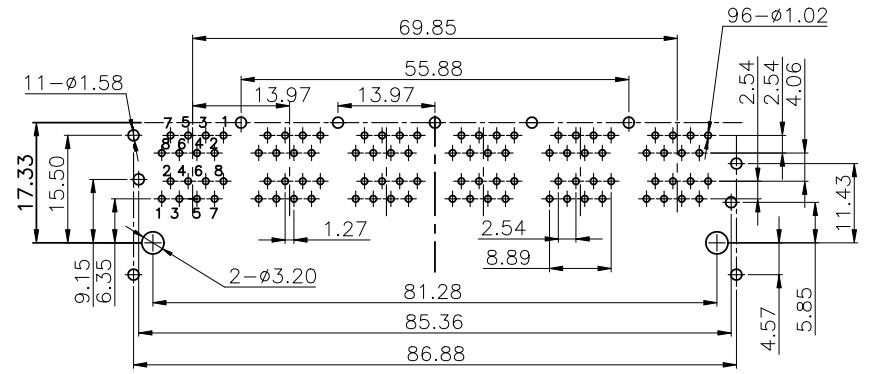
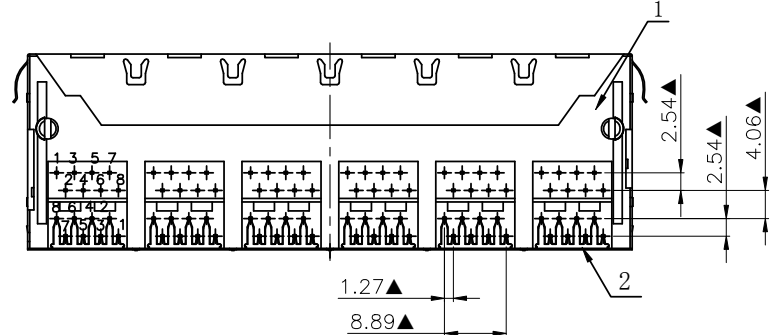
电镀代码  
05-G/F  
09-2u"  
11-3u"  
15-6u"  
19-15u"  
23-30u"  
24-50u"

Detail A Scale 4

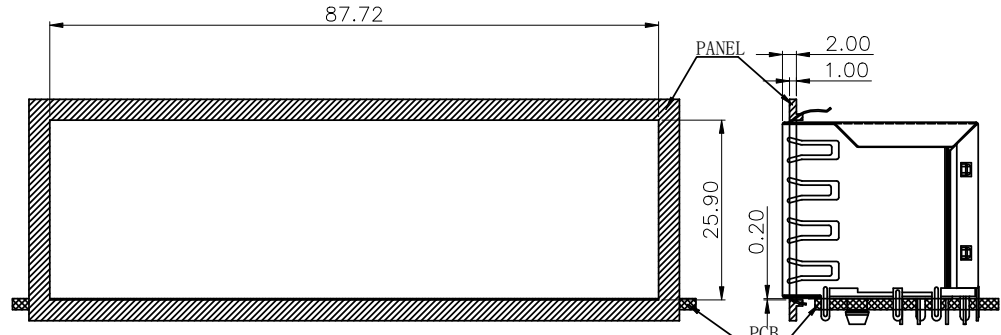
MATERIALS:

- Housing: Glass Filled PA46 BLACK UL94V-0 (ROHS).
- Insert: Glass Filled PBT UL94V-0 (ROHS).
- Shielding: 0.20mm Copper Alloy with Nickel Plated (ROHS).
- Contact: 0.35x0.44mm Phosphor Bronze gold Plating Over Nickel (ROHS).
- Welding post: 0.20mm Copper Alloy with Nickel Plated (ROHS).

※MATES WITH MODULAR PLUG CONFORMING TO FCC PART 68, SUBPART F.  
※凡标注▲记号为重点尺寸。



RECOMMENDED P.C.B LAYOUT TOP VIEW  
(COMPONENT SIDE TOLERANCE ±0.05)



Recommended panel cutout

bezel opening below top of PCB

产品客户图 Customer Drw		GLGNET® 深圳市方向电子股份有限公司 SHEN ZHEN GLGNET ELECTRONICS CO., LTD.			
未注公差 TOLERANCE UNLESS OTHERWISE SPECIFIED	.X .XX .XXX X°	±0.35 ±0.25 ±0.15 ±3°	设计 DESIGN		品名 TITLE
比例 SCALE	1:1	角法 PROJ.	设计 DESIGN		5921-Q-S-K18-A-2x6-8C-V
张数 SHEET	1/1	大小 SIZE	校对 CHECKED		料号 ITEM NO.
单位 UNIT	mm	版本 REV.	核准 APPROVED		43046-00XXX1
		C3			图号 DWG NO.
					GLG-110572 GLG-W0-198