

NO.	ECN NO.	DESCRIPTION	REV.	DRAW	DATE
1					
2					
3					

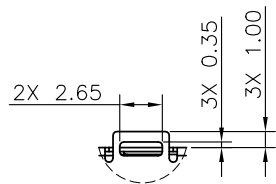
NOTES:

1.MATERIALS:

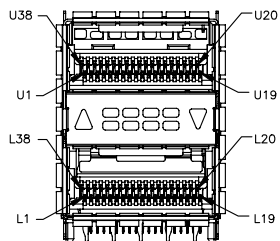
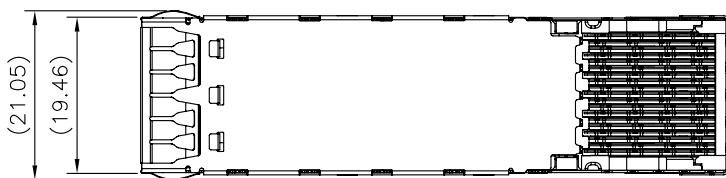
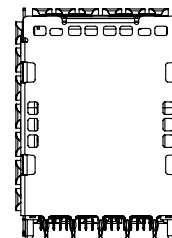
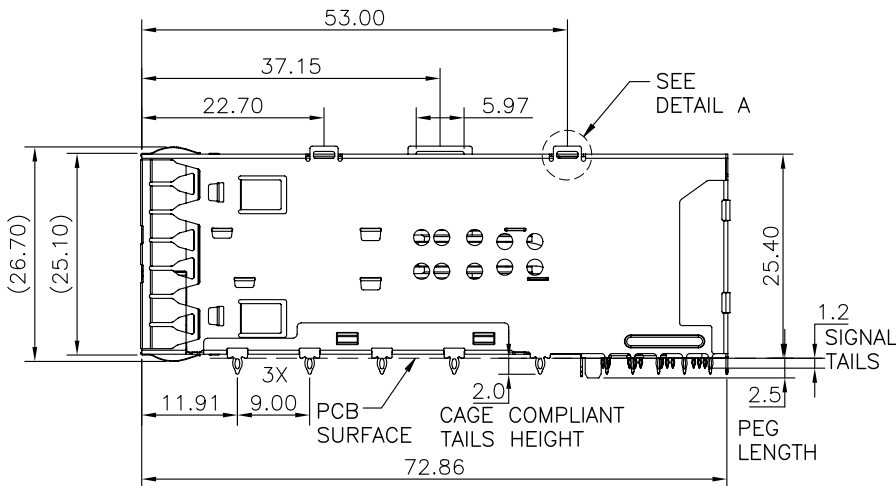
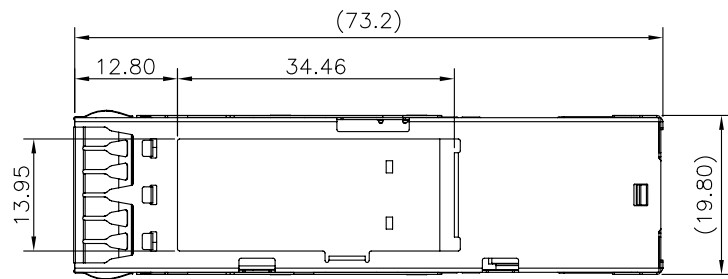
- CAGE: COPPER ALLOY.
- SPRING: COPPER ALLOY,NICKEL PLATED.
- HOUSING: HIGH PERFORMANCE THERMOPLASTIC,94V-0.
- CONTACT: COPPER ALLOY.
- LIGHT PIPE: POLYCARBONATE.

2.FINISH:

- CAGE: NICKEL OVERALL.
- SPRING: NICKEL OVERALL.
- CONTACT: 0.76um GOLD ON MATING END,2.54um MATTE TIN ON SOLDER TAIL,ALL OVER 1.27um NICKEL



DETAIL A(2:1)

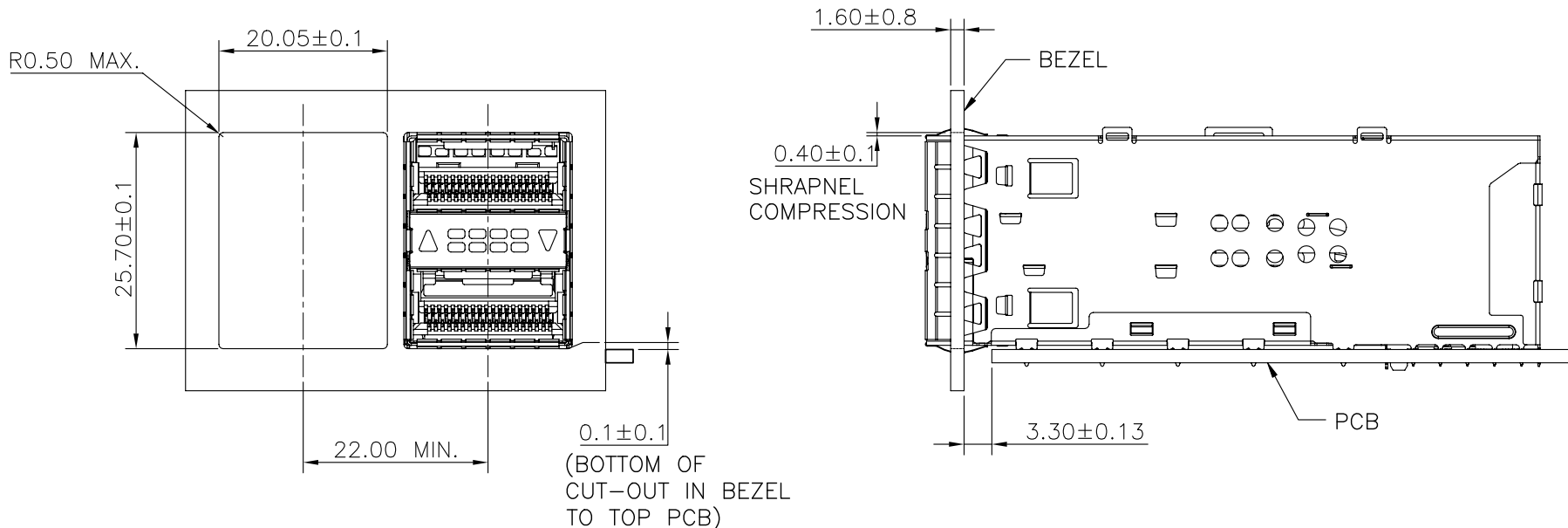


未注公差	TOLERANCE
容许公差	
.X ±0.35 X.* ±2*	
.XX ±0.25 .X.* ±1*	
.XXX ±0.15 .XX**	

GLGNET® 深圳方向电子有限公司
SHEN ZHEN GLGNET ELECTRONICS CO.,LTD.

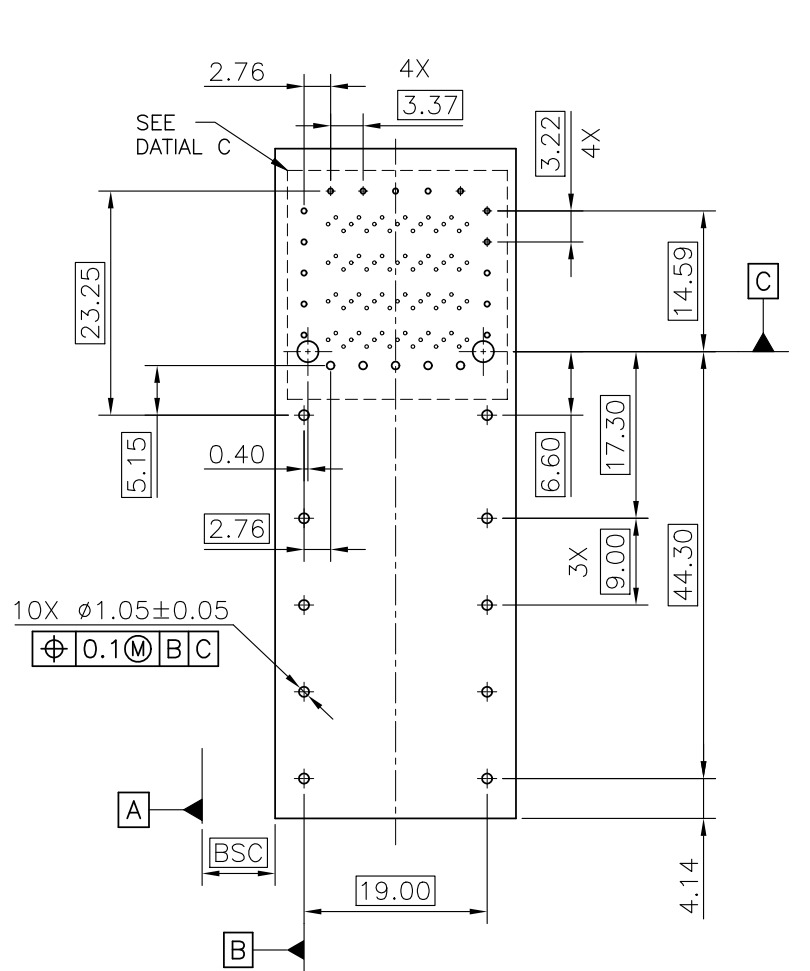
比例 SCALE	1:1	角法 PROJ.		设计 DESIGN		品名 TITLE	QSFP28 2x1-A1 WITH OUTER LIGHT PIPE
张数 SHEET	1/4	纸张 SIZE	A4	校对 CHECKED		料号 ITEM NO.	49012-00M311
单位 UNIT	mm	版本 REV.	A2	核准 APPROVE		图号 DWG NO.	GLG-WS-404

NO.	ECN NO.	DESCRIPTION	REV.	DRAW	DATE
1					
2					
3					

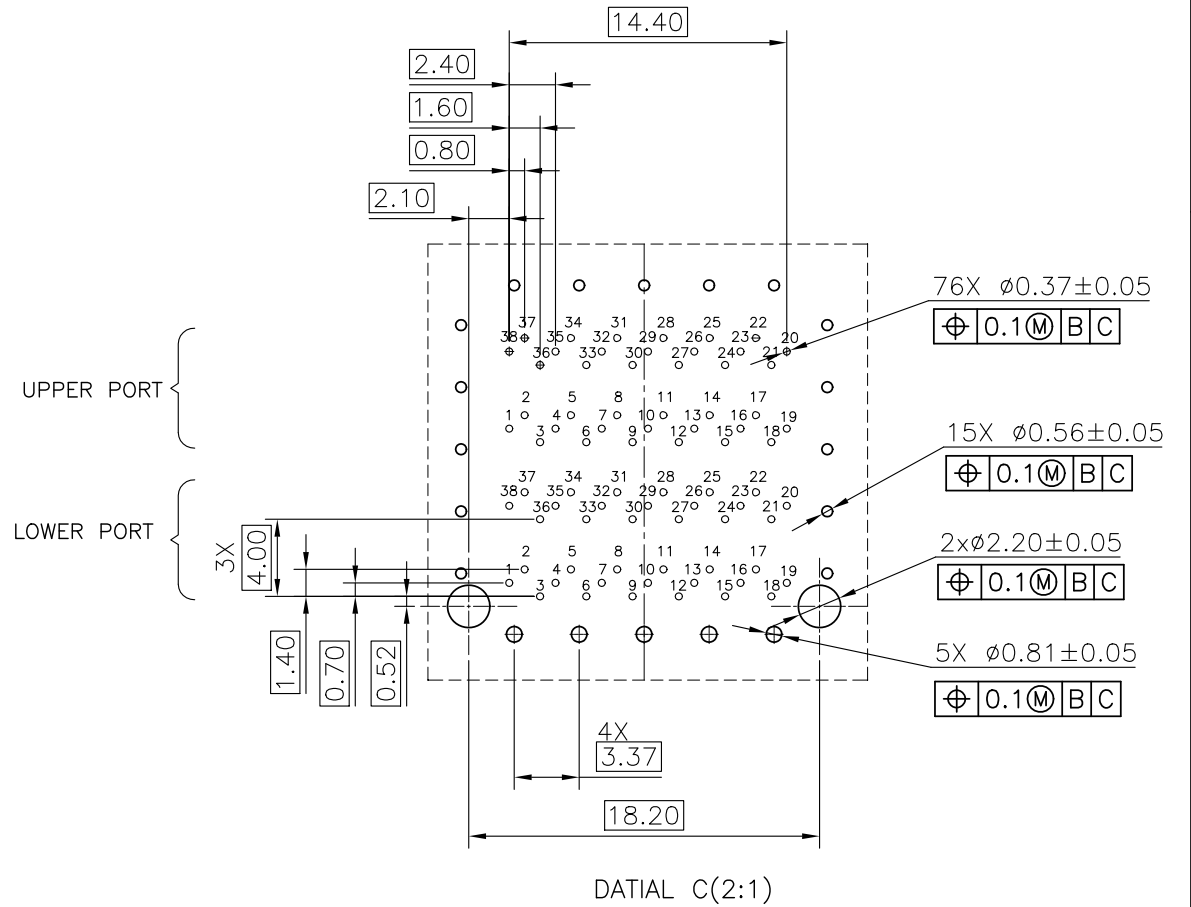


未注公差 容许公差 TOLERANCE .X ± 0.35 X.* $\pm 2'$.XX ± 0.25 .X* $\pm 1'$.XXX ± 0.15 .XX**				GLGNET® 深圳方向电子有限公司 SHEN ZHEN GLGNET ELECTRONICS CO.,LTD.			
比例 SCALE	1:1	角法 PROJ.		设计 DESIGN		品名 TITLE	QSF28 2x1-A1 WITH OUTER LIGHT PIPE
张数 SHEET	2/4	纸张 SIZE	A4	校对 CHECKED		料号 ITEM NO.	49012-00M311
单位 UNIT	mm	版本 REV.	A2	核准 APPROVE		图号 DWG NO.	GLG-WS-404

NO.	ECN NO.	DESCRIPTION	REV.	DRAW	DATE
1					
2					
3					



RECOMENDED PCB LAYOUT (COMPONENT SIDE)
PCB TOLERANCE ±0.05



UPPER PORT
LOWER PORT

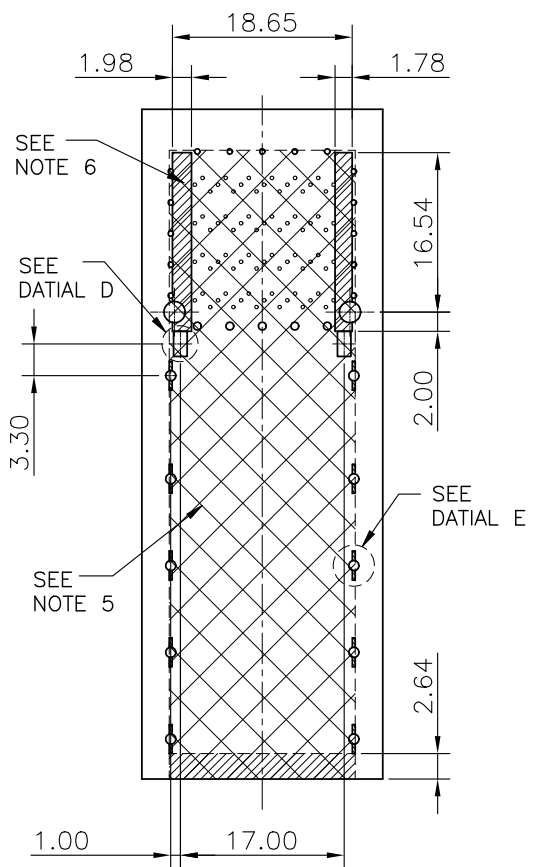
DATIAL C(2:1)

未注公差
容许公差 TOLERANCE
.X ±0.35 .X* ±2*
.XX ±0.25 .X* ±1*
.XXX ±0.15 .XX**

GLGNET® 深圳方向电子有限公司
SHEN ZHEN GLGNET ELECTRONICS CO.,LTD.

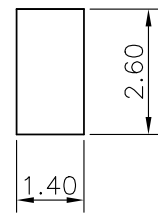
比例 SCALE	1:1	角法 PROJ.		设计 DESIGN		品名 TITLE	QSFP28 2x1-A1 WITH OUTER LIGHT PIPE
张数 SHEET	3/4	纸张 SIZE	A4	校对 CHECKED		料号 ITEM NO.	49012-00M311
单位 UNIT	mm	版本 REV.	A2	核准 APPROVE		图号 DWG NO.	GLG-WS-404

NO.	ECN NO.	DESCRIPTION	REV.	DRAW	DATE
1					
2					
3					

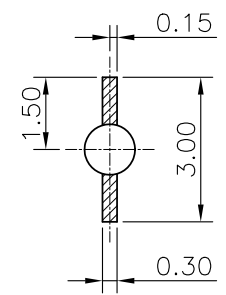


KEEPOUT AREAS FOR 2LP APPLICATION COMPONENT SIDE OF BOARD

NOTE:
 3.DATUM AND BASIC DIMENSION ESTABLISHED BY CUSTOMER.
 4.THE PCB THICKNESS IS 1.57mmMIN.
 5.THE ENTIRE AREA OF THE CONNECTOR OUTPRINT,INDICATED BY THE DOUBLE DASHED LINE,TO BE CONSIDERED THE KEEPOUT AREA FOR COMPONENTS
 6.CROSS-HATCHED AREAS REPRESENT ZONES ON THE PCB THAT COME IN CONTACT WITH OR BE IN COLSE PROXIMITY TO THE PLASTIC HOUSING OR THE CONNECTOR CAGE, INDICATED AREAS TO BE CONSIDERED TRACE FREE.
 7.HATCHED AREA IS PLACEMENT ZONE FOR LED, LED SHOULD BE CENTERED WITHIN ZONE. RECOMMEND 0805 PACKAGE.



DATIAL D(5:1)
(SEE NOTE 7)



DATIAL E(5:1)

未注公差 容许公差 TOLERANCE .X ±0.35 .X* ±2* .XX ±0.25 .X* ±1* .XXX ±0.15 .XX**				GLGNET® 深圳方向电子有限公司 SHEN ZHEN GLGNET ELECTRONICS CO.,LTD.			
比例 SCALE	1:1	角法 PROJ.		设计 DESIGN		品名 TITLE	QSFP28 2x1-A1 WITH OUTER LIGHT PIPE
张数 SHEET	4/4	纸张 SIZE	A4	校对 CHECKED		料号 ITEM NO.	49012-00M311
单位 UNIT	mm	版本 REV.	A2	核准 APPROVE		图号 DWG NO.	GLG-WS-404