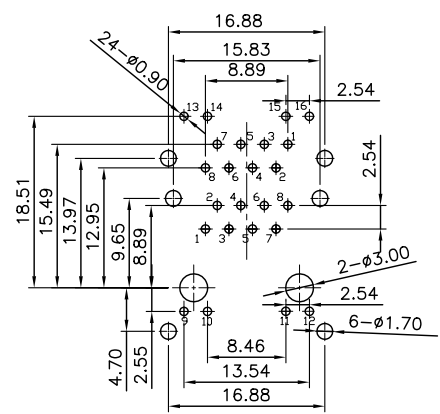
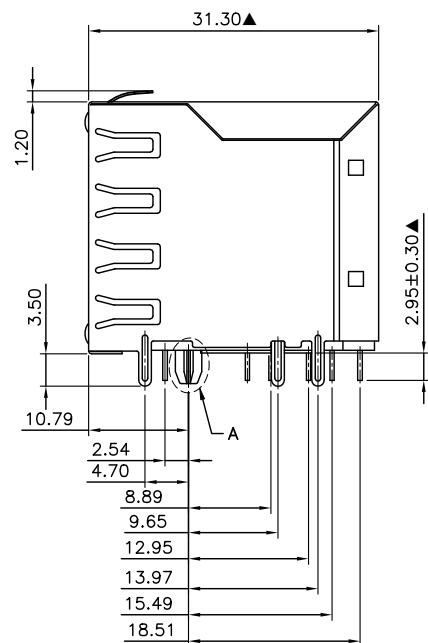
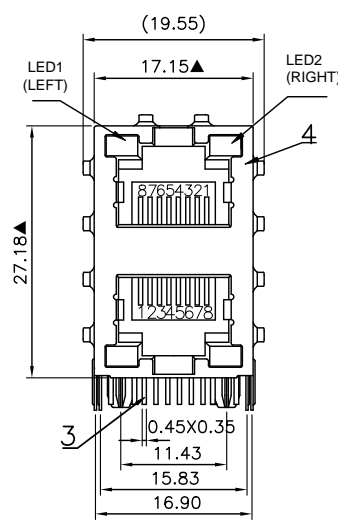
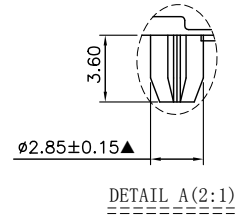
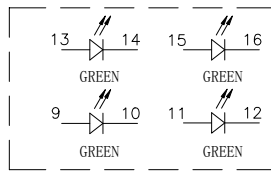
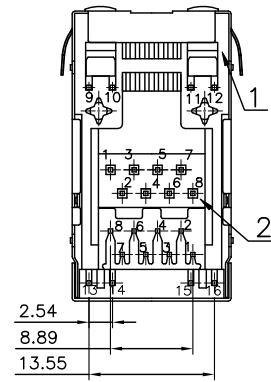


NO.	ECN NO.	DESCRIPTION	REV.	DRAW	DATE
1					
2					
3					



RECOMMENDED P. C. B LAYOUT
TOP VIEW (COMPONENT SIDE)
GENERAL TOLERANCE: ±0.05



- NOTES:
- Housing: Glass Filled PA46 BLACK UL94V-0 (RoHS).
 - Insert: GLASS FILLED PBT BLACK UL94V-0 (ROHS).
 - Contact: Phosphor Bronze (ROHS).
30u" GOLD PLATING ON CONTACT AREA.
50u" MIN NICKEL UNDERPLATED OVERALL.
80u" MIN MATTE-TIN ON SOLDER TAIL.
 - Shell: 0.2mm Thickness Copper Alloy with Nickel Plated (RoHS).
 - Led1: Green (RoHS).
 - Led2: Green (RoHS).
 - Durability: 750 Cycles Min;
 - Connector Mating, Unmating Force: 30N Max.
 - Plug Retention Force: 50N min, 60s±5s.
 - MATES WITH MODULAR PLUG CONFORMING TO FCC PART 68, SUBPART F.
 - The Dimensions Marked "▲" Symbols Are Stand For Key Characteristics.

Electrical specification:

- Voltage Rating: 125 VAC RMS.
- Current Rating: 1.5A Max @25° C;
- Contact Resistance: 20 mΩ Max;
- Insulation Resistance: 500 MΩ Min. @500 VDC;
- Dielectric withstanding Voltage:
1000 V DC or AC peak, for 1 minute 0.5 mA contact-to-contact.
1500 V DC or AC peak, for 1 minute 0.5 mA contact to screen and test panel.

Environmental characteristics:

- Stockpile Temperature: - 40 ° C to 70° C;
- Operating Temperature: - 40 ° C to 70° C;

45005-00 X XX1

规格流水码

S: 半金亮锡
M: 半金雾锡

电镀代码
-05-G/F
-11-3u"
-15-6u"
-19-15u"
-23-30u"

比例 SCALE		张数 SHEET		单位 UNIT		角法 PROJ.		大小 SIZE		版本 REV.		设计 DESIGN		校对 CHECKED		核准 APPROVED		品名 TITLE		料号 ITEM NO.		图号 DWG NO.	
1:1	1/1	mm				P0													5931-Q-S-K10-2X1-L-c-1B(G/G)	45005-00XXX1	GLG-WL-018		

GLGNET 深圳市方向电子股份有限公司
Shenzhen GLGNET Electronics Co.,LTD.